

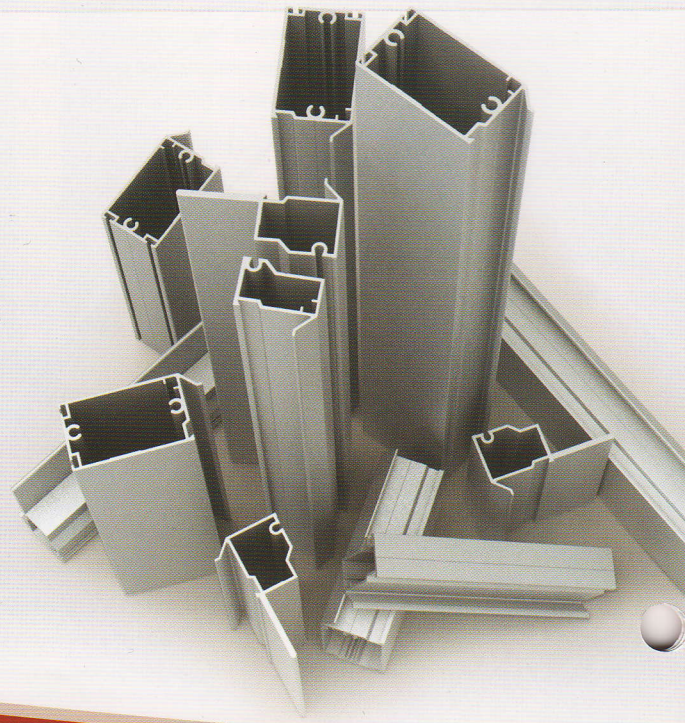


## Alumatite Sectional Aluminum Door Models

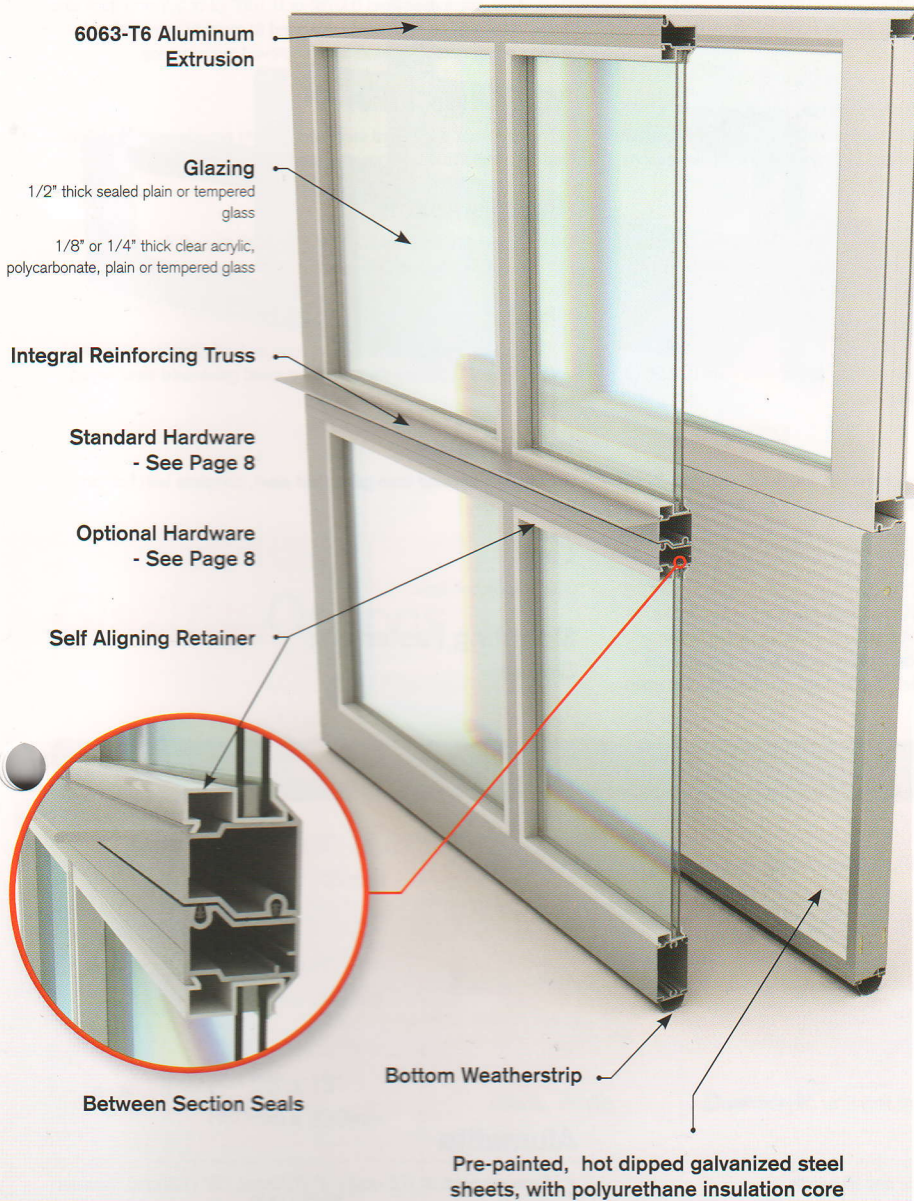
A150, A175, A150T, A175T

Dependable door systems for facilities needing maximum light and visibility.

Alumatite Door Systems are designed to provide an attractive and practical solution when maximum light and/or visibility is required. Built to withstand heavy use and high traffic using extruded aluminum alloy rails and stiles with a full width integral horizontal reinforcing truss at each pair of meeting rails. Highest quality hardware components provide years of dependable operation. Choose from a variety of finish and glazing options or configure your door with Thermatite panels for extra strength and additional energy savings.



# Product Specifications



Pre-painted, hot dipped galvanized steel sheets, with polyurethane insulation core

## Panel & Section Schedule

Door Width	Panels Wide	Door Height	Sections High
Up to 9'-2" (2794mm)	2	7'-1" to 8'-1" (2159mm to 2464mm)	4
		8'-2" to 10'-1" (2489mm to 3073mm)	5
9'-3" to 12'-2" (2819mm to 3708mm)	3	10'-2" to 12'-1" (3099mm to 3683mm)	6
		12'-2" to 14'-1" (3708mm to 4293mm)	7
12'-3" to 16'-2" (3734mm to 4928mm)	4	14'-2" to 16'-1" (4318mm to 4902mm)	8

## Section Details

### Section Thickness

A150 / A150T	1 1/2" (38mm)
A175 / A175T	1 3/4" (45mm)

### Section Framing

Fabricated from 6063-T6 aluminum alloy extrusions, extrusion thickness 0.075" (1.9mm) thick, and 0.105" (2.7mm) thick at hardware mounting locations.

- **End stiles:** 3 3/8" (86mm) wide aluminum for single end roller brackets; 6 3/8" (162mm) for double end roller brackets
- **Centre stiles:** 2" (51mm) wide aluminum
- **Pair of meeting rails:** 3 1/4" (83mm) high, aluminum
- **Top and bottom rails:** 3 3/8" (86mm) high, aluminum

### Glazing Sections

- 1/8" (3mm) thick or 1/4" (6mm) thick clear acrylic, polycarbonate, plain or tempered glass or 1/2" (13mm) thick sealed plain or tempered glass
- \* Not available for A150
- Self-aligning glazing retainer

### Paneled Sections

Fabricated from 0.05" (1.29mm) thick stucco embossed aluminum sheet.

### Thermatite Bottom Section (optional top section)

Insulated sections fabricated from pre-painted, hot dipped galvanized, steel sheet; with rigid polyurethane insulation core, CFC and HCFC free, face sheet stucco embossed and rib reinforced.

A150 / A150T	R 13.21 ft <sup>2</sup> hF/Btu / U 0.430 W/m <sup>2</sup> K
A175 / A175T	R 16 ft <sup>2</sup> hF/Btu / U 0.355 W/m <sup>2</sup> K

### Reinforcement

0.105" (2.7mm) thick aluminum extrusion for hardware mounting. Full width integral horizontal, reinforcing truss at each pair of meeting rails. Minimum depth of 1 3/4" (45mm)

### Maximum Opening Width

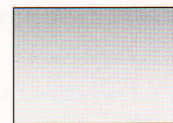
All Models	16'-2" (4928mm)
------------	-----------------

### Maximum Opening Height

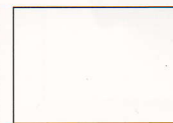
All models	16'-0" (4877mm)
------------	-----------------

### Finish

Clear\* anodizing to AA Spec A-21 (Custom anodized colors are also available). White Duracron Super 600 thermo-setting acrylic enamel.



Clear Anodizing\*



White

\* Not available for A150

## Warranty

**1 year on materials and workmanship**